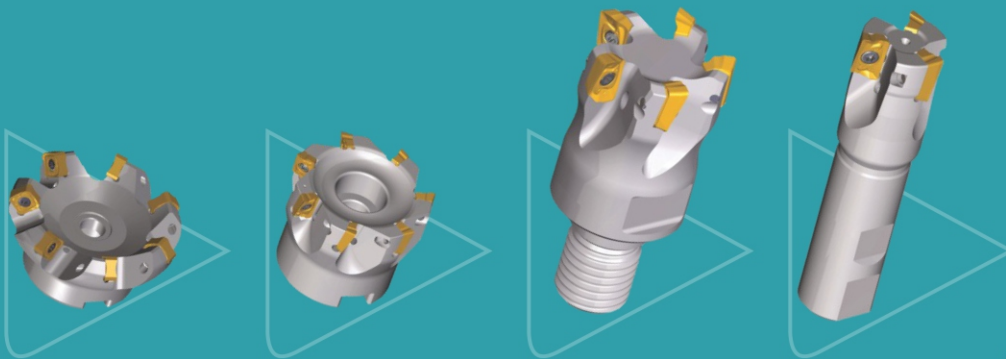


# Milling Products

## Solutions for Milling



- ▶ Wide range of milling solutions
- ▶ Indexable drill with SPMG insert
- ▶ Ideal for challenging applications
- ▶ High productivity
- ▶ Optimised cost of operation

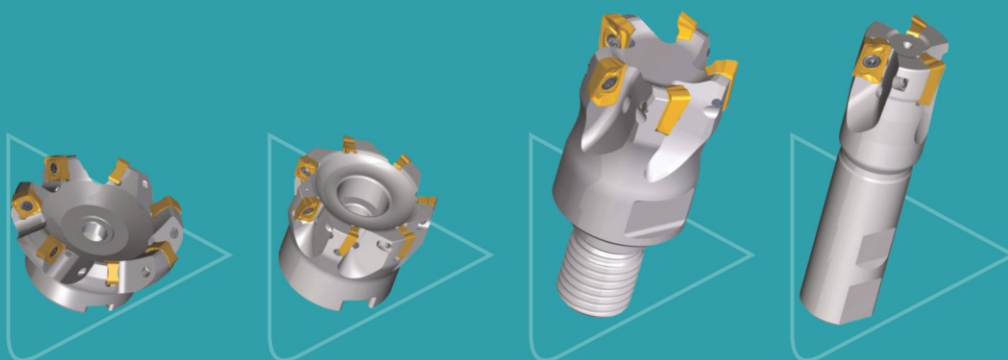


**SIGMA TIZ**

**23**  
YEARS OF CELEBRATION

# Milling Products

## Solutions for Milling

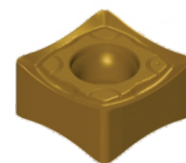
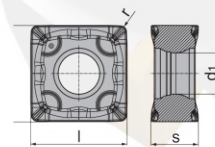


- ▶ Wide range of milling solutions
- ▶ Indexable drill with SPMG insert
- ▶ Ideal for challenging applications
- ▶ High productivity
- ▶ Optimised cost of operation

## SNMX 120608 SN - MP

### Octacut 88N

- 88° face mill with 8 cutting edges
- Special geometry for side and face mill with higher DOC
- High positive helical geometry for smooth cut



Coated Carbide Grade	SCP30M	SCP35M	SCP40M
	●	●	●

### SNEX 1206 - WIPER INSERT SF88 SN12.XXX ZXX

Cutter Range \_\_\_\_\_

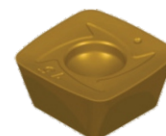
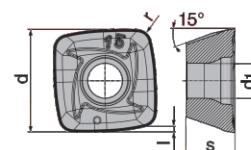
- Cutter dia range available is from Ø50 to Ø250



## SDMT 140520 SR-MPH (HIGH FEED)

### Tetracut 90P feed

- Aggressive ramping capability
- Highest tooth feed upto  $F_z=2.4\text{mm}$
- Universal grade for cast iron, steel and S.S machining
- High contact time
- Same cutter body used for square shoulder and high feed

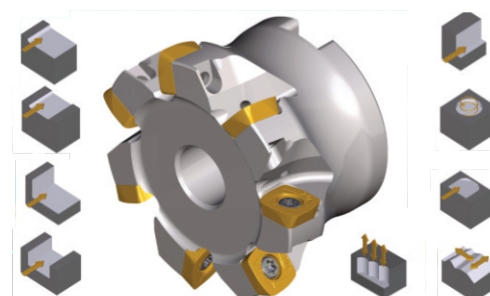


Coated Carbide Grade	SCP20M	SCP25M	SCP30M	SCP35M
	●	●	●	●

### SF90 SD14.XXX ZXX

Cutter Range \_\_\_\_\_

- Cutter dia range available is from Ø50 to Ø250





## SDMT 120512 SR-MPH (HIGH FEED)

### Tetracut 90P feed

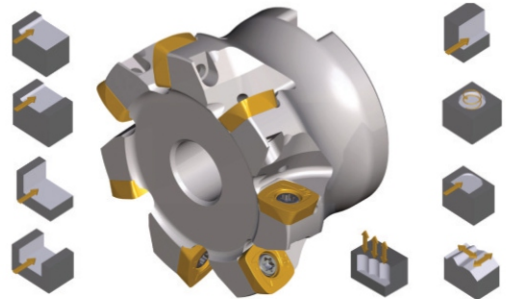
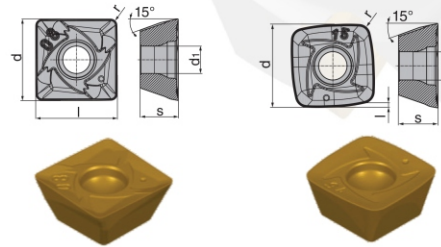
- High feed cutter inserts with 2 positive cutting edges
- Aggressive ramping capabilities
- Universal grade for steel, S.S, and duplex material
- Special design cutter body for higher tool life

Coated Carbide Grade	SCP30M	SCP35M
	●	●

### SF45 SD12.XXX ZXX

Cutter Range \_\_\_\_\_

- Cutter dia range available is from Ø50 to Ø160



## ONMU 050608 SN-MP

### Hexadec Cut 45N

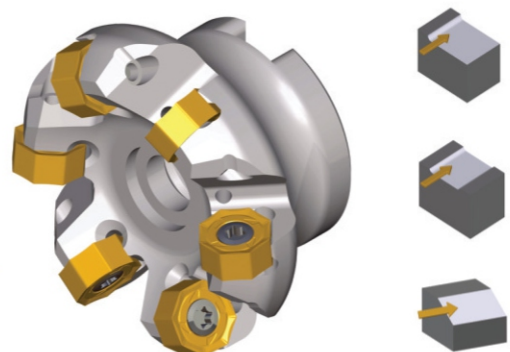
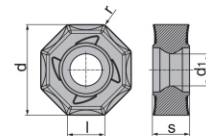
- 45° Face mill with 16 cutting edges
- Effective positive cutting edges for smooth cut
- Numbering of cutting edge for exact indexing

Coated Carbide Grade	SCP30M	SCP35M
	●	●

### SF45 ON05.XXX ZXX

Cutter Range \_\_\_\_\_

- Cutter dia range available is from Ø50 to Ø125

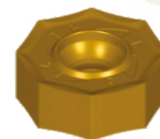
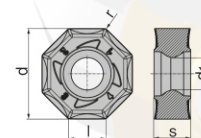




## ONMU 080608 SN-MP

### Hexadecut 45N

- 45° face mill with 16 cutting edges
- Negative basic geometry with effective positive cutting edge from smooth cut
- Numbering of cutting edges for exact indexing

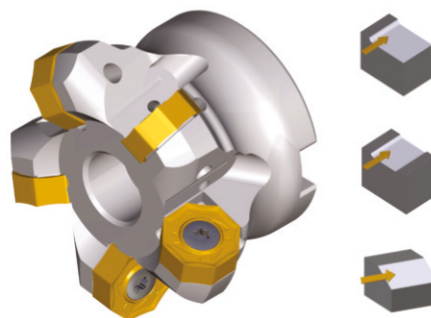


Coated Carbide Grade	SCP20M	SCP25M	SCP30M	SCP35M
	●	●	●	●

### SF45 ON08.XXX ZXX

Cutter Range \_\_\_\_\_

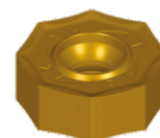
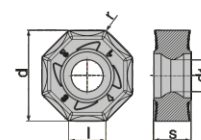
- Cutter dia range available is from Ø50 to Ø250



## ONMU 050608 SN-MP

### Hexadecut 45N

- 45° face mill with 16 cutting edges
- Negative basic geometry with effective positive cutting edge for smooth cut
- Higher cutting edge length for DOC
- Wiper Geometry For High Class Surface Finish



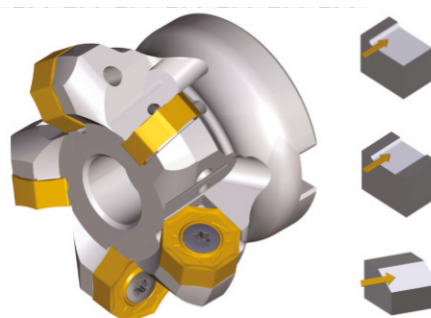
Coated Carbide Grade	SCP30M	SCP35M
	●	●

### ONMQ08-FW-wiper Insert

### SF45 ON05.XXX ZXX

Cutter Range \_\_\_\_\_

- Cutter dia range available is from Ø63 to Ø250



## ONMU 080608 SN-MP

### Hexadecut 45N

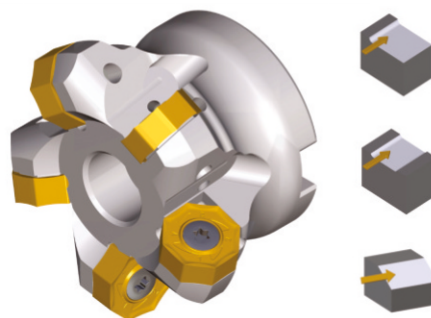
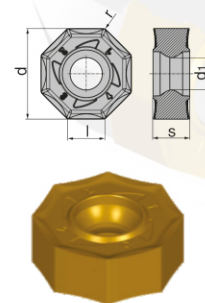
- 45° face mill with 16 cutting edges
- Negative basic geometry with effective positive cutting edge from smooth cut
- Numbering of cutting edges for exact indexing

Coated Carbide Grade	SCP20M	SCP25M	SCP30M	SCP35M
	●	●	●	●

### SF45 ON08.XXX ZXX

Cutter Range \_\_\_\_\_

- Cutter dia range available is from Ø50 to Ø250



## ONMU 050608 SN-MP

### Hexadecut 45N

- 45° face mill with 16 cutting edges
- Negative basic geometry with effective positive cutting edge for smooth cut
- Higher cutting edge length for DOC
- Wiper Geometry For High Class Surface Finish

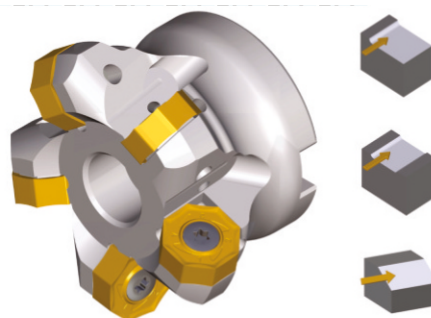
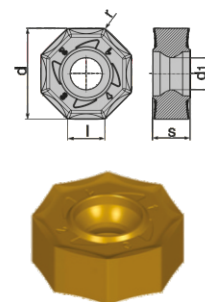
Coated Carbide Grade	SCP30M	SCP35M
	●	●

### ONMQ08-FW-wiper Insert

### SF45 ON05.XXX ZXX

Cutter Range \_\_\_\_\_

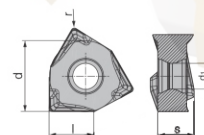
- Cutter dia range available is from Ø63 to Ø250



## WNEX 040304 MM-SN

### Hexacut 90N

- 90° face and shoulder mill with 06 cutting edges
- Effective positive chip angle for smooth cut
- Productivity guaranteed with smaller diameter from Ø20

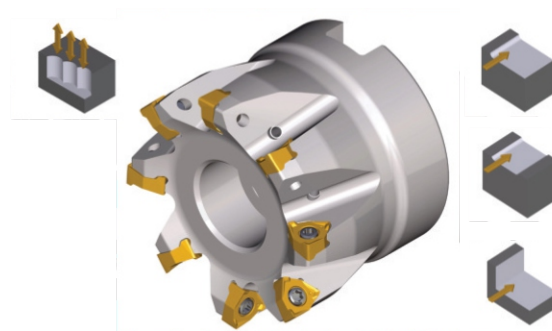


Coated Carbide Grade	SCP25M	SCP35M
	●	●

### SF90 WN04.XXX ZXX

Cutter Range \_\_\_\_\_

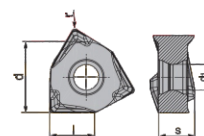
- Cutter dia range available is from Ø20 to Ø63



## WNEX 080608 RP

### HexaCut 90N

- 90° face and shoulder mill with 06 cutting edges
- Effective positive rake angle for smooth cut
- Productivity guaranteed with higher DOC

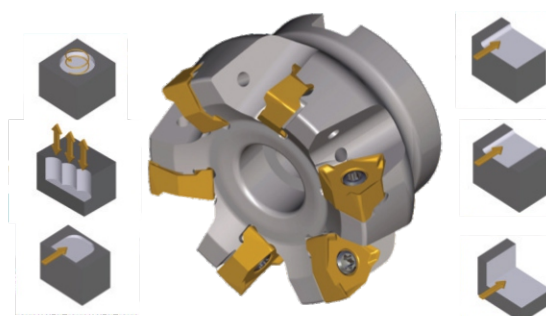


Coated Carbide Grade	SCP25M	SCP35M
	●	●

### SF90 WN08.XXX ZXX

Cutter Range \_\_\_\_\_

- Cutter dia range available is from Ø40 to Ø160





## LNMX 100605 SR-RP

### TetraCut 90N

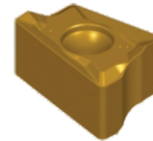
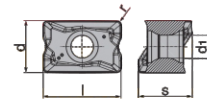
- 90° shoulder mill with 04 cutting edges
- Improved productivity with high feed and depth capability
- Universal grade for steel, SS, SG iron
- Effective positive rake for smooth cut

Coated Carbide Grade	SCP25M	SCP35M
	●	●

### SE90 LN10.XXX ZXX

Cutter Range \_\_\_\_\_

- Cutter dia range available is from Ø20 to Ø80



## APMT 1135PDER SCP35M

### ISO 90P

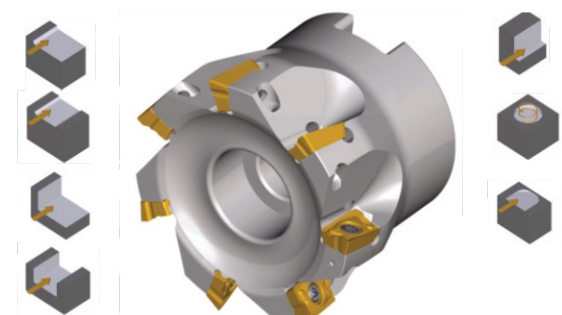
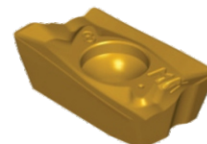
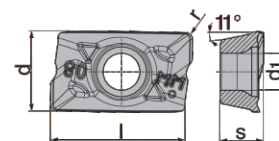
- 90° shoulder mill with 02 positive cutting edges
- Positive cutting edge for smooth cut
- Special geometry for helical ramping and slotting application

Coated Carbide Grade	SCP30M	SCP35M
	●	●

### SE90 AP11.XXX ZXX

Cutter Range \_\_\_\_\_

- Cutter dia range available is from Ø16 to Ø80

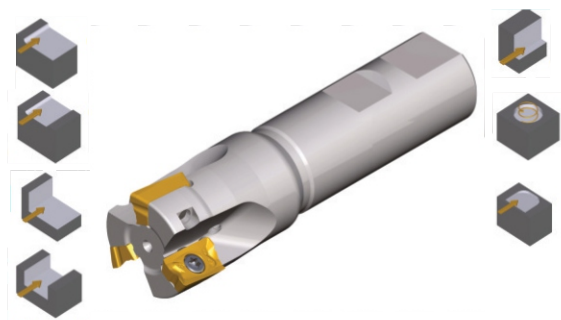
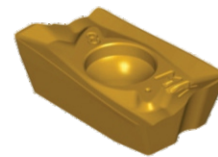
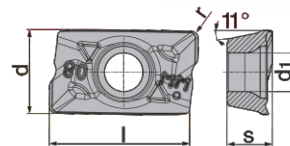


## APKT 1705 PD-ER / APKT16

### ISO 90P

- 90° shoulder mill with 02 cutting edges
- Helical cutting edge for smooth cutting
- Special geometry for medium machining, ramping and roughing application

Coated Carbide Grade	SCP25M	SCP35M
	●	●



### SE90 AP11.XXX ZXX

Cutter Range \_\_\_\_\_

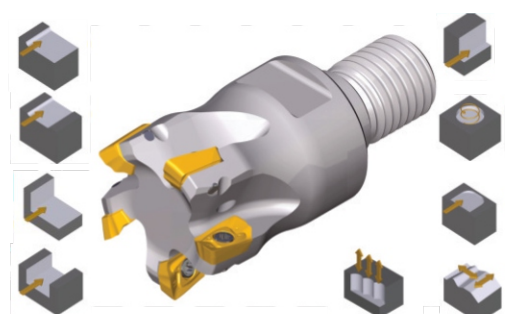
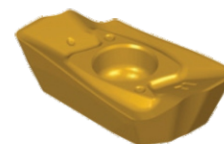
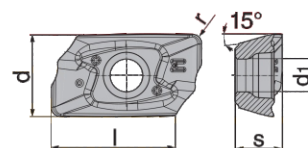
- Cutter dia range available is from Ø25 to Ø160

## LDMX-100408 SR-MM

### Dicut 90P

- 90° sholder mill with 2 positive cutting edges
- Multi functional tool for highest productivity
- Exact 90°shoulder upto 1/2 cutting edge length on all diameter

Coated Carbide Grade	SCM35M	SCM40M
	●	●



### SF90 LD10.XXX ZXX

Cutter Range \_\_\_\_\_

- Cutter dia range available is from Ø16 to Ø80

## CERAMIC CBN MILLING

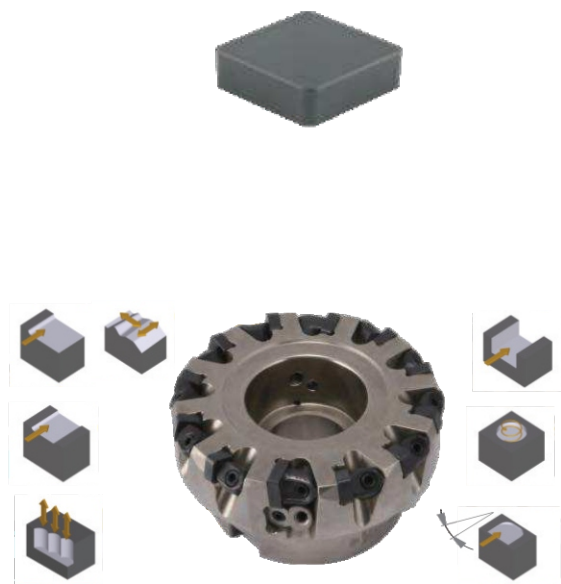
- Aluminum body cutter 1/3 of steel weight
- Double gripping adjustment for wiper inserts
- Fine pitch design
- Work on Higher cutting speed

Coated Carbide Grade	SBN 6500	SBN 7025
	●	●

### SF75 SN09.XXX ZXX CBN

Cutter Range \_\_\_\_\_

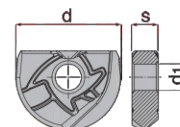
- Cutter Dia Range Available Is From  $\varnothing 3$  To  $\varnothing 15$



## BE12-XXX / BE16-XXX / BE20-XXX

### BallCut

- Ball nose copying tool for semi finishing & finishing
- Soldered solid carbide head for reduced vibration
- Non-carbide bodies area available
- Wide variety of designs screw-on type, conical end mills, cylindrical end mills



Coated Carbide Grade	SCH03M	SCH10M	SCP23M	SCP30M
	●	●	●	●

### SEB000 BEXX.XXX ZXX XXX

Cutter Range \_\_\_\_\_

- Cutter dia range available is from  $\varnothing 8$  to  $\varnothing 32$

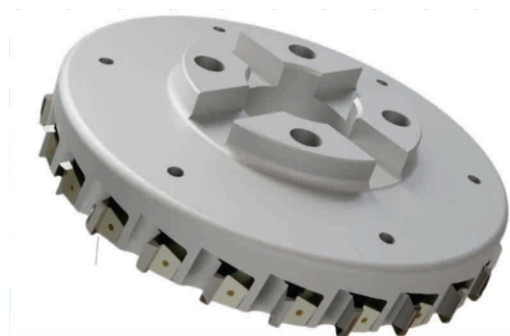
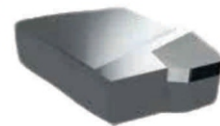




## LDCN 190412-CB5001

- Designed For Casting Finish Milling Application
- Cbn Sub Micron Grade Achieved Surface Value With Higher Tool Life
- Working On 1200 - 2000 M / Min Vc & Feed Rate Is 0.08 To 0.2 With 3 Mm Depth Of Cut
- Wiper Insert Also Available
- LIFE = 1.2 X COMPETITORS

Coated Carbide Grade	CB5001
	●



## FW XXX . XX ZXX

Cutter Range \_\_\_\_\_

NOTE :- Wiper Insert FDCN 2005-1.2 CB5050

For Spl. Cutter Enquiry Will Be Treated Separately .

Sr No	Description	cutting edge HDCN	wiper insert WDCN
1	Fw125.32.z12	10	02
2	Fw 160.40.z18	15	03
3	Fw 250.60.z24	20	04

## Indexable Drill with SPMG Insert

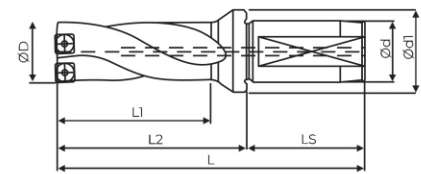
Indexable drill body is designed & made from special high tensile steel suitable for higher feed rate & longer tool life. unique surface coating treatment & large flute with proper helix angle control chip flow.

### Features

- ▶ Highly productive, reliable, and economical indexable drills.
- ▶ 4 real cutting edges per insert.
- ▶ X-offset design to adjust diameter size on turning machines. and optimize tolerances on machining centers.



Drill L/D	2D	3D	4D	5D
Drill Dia	Ø13-Ø50	Ø13-Ø50	Ø13-Ø50	Ø14-Ø50
Suitable Insert	SPMG05 / SPMG06 / SPMG07 SPMG09 / SPMG11 / SPMG14			



Coated Carbide Grade	P3100	P3200
	●	●



### Authorised Dealer

#### Goyouhan Engineering Technologies Pvt. Ltd.

**Address:** Office no D-06, Plot No.T-80, Mangalmurti Ind Complex,  
Back Side of Hockey Stadium MIDC Bhosari, Pune - 411026

**Call:** 7620195176 / 9850809521

**Email:** dny.jare@goyouhan.in

**Website :** [www.goyouhan.in](http://www.goyouhan.in)